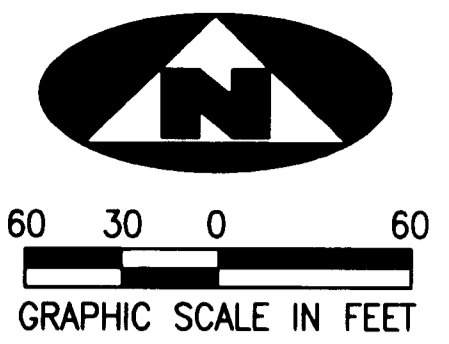
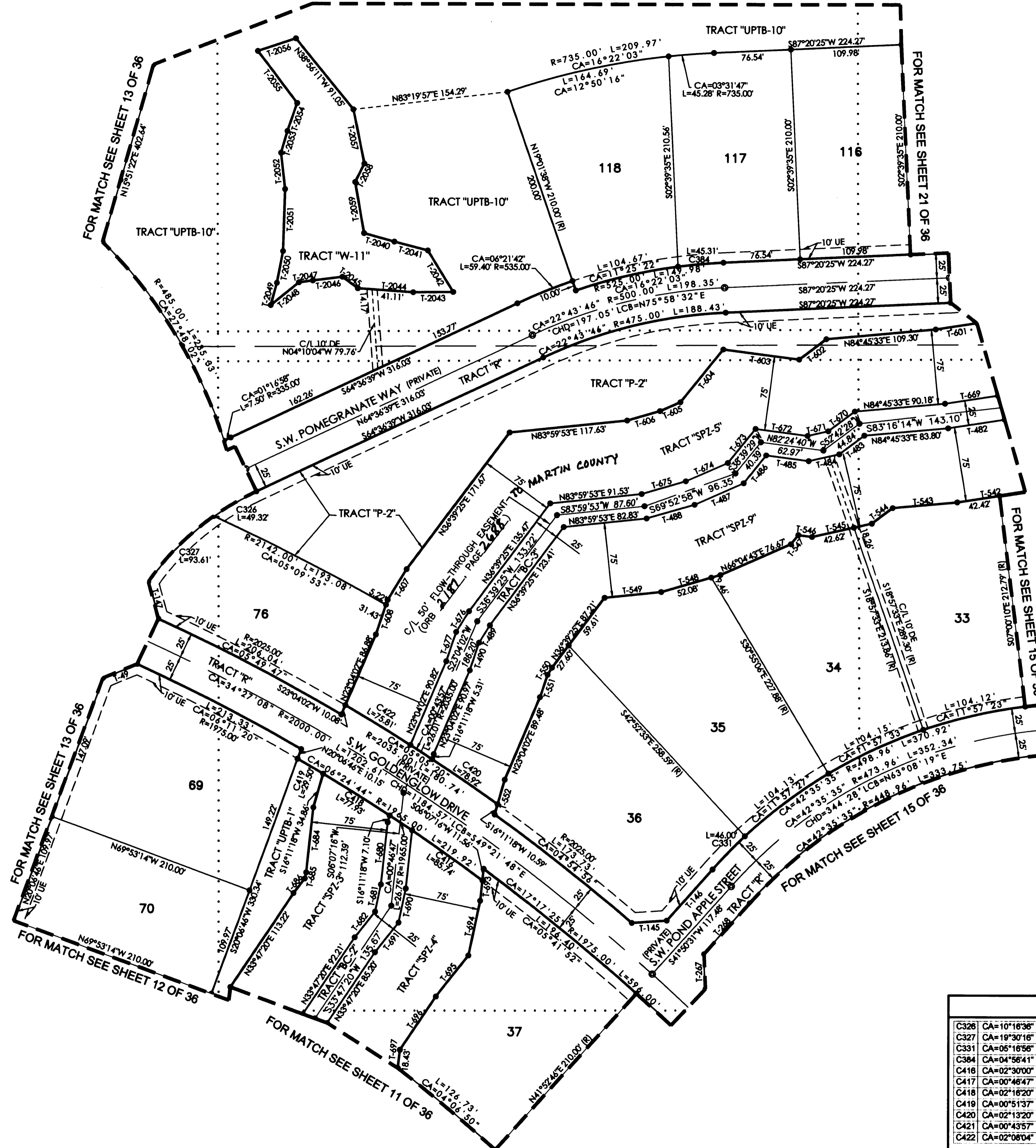


BEING A REPLAT OF A PORTION OF SECTIONS 14 AND 15, TOWNSHIP 38 SOUTH, RANGE 40 EAST, PALM CITY FARMS, RECORDED IN PLAT BOOK 6, PAGE 42, PUBLIC RECORDS PALM BEACH COUNTY (NOW MARTIN COUNTY), FLORIDA, AND BEING A PART OF SECTIONS 10 AND 11, TOWNSHIP 38 SOUTH, RANGE 40 EAST, MARTIN COUNTY, FLORIDA



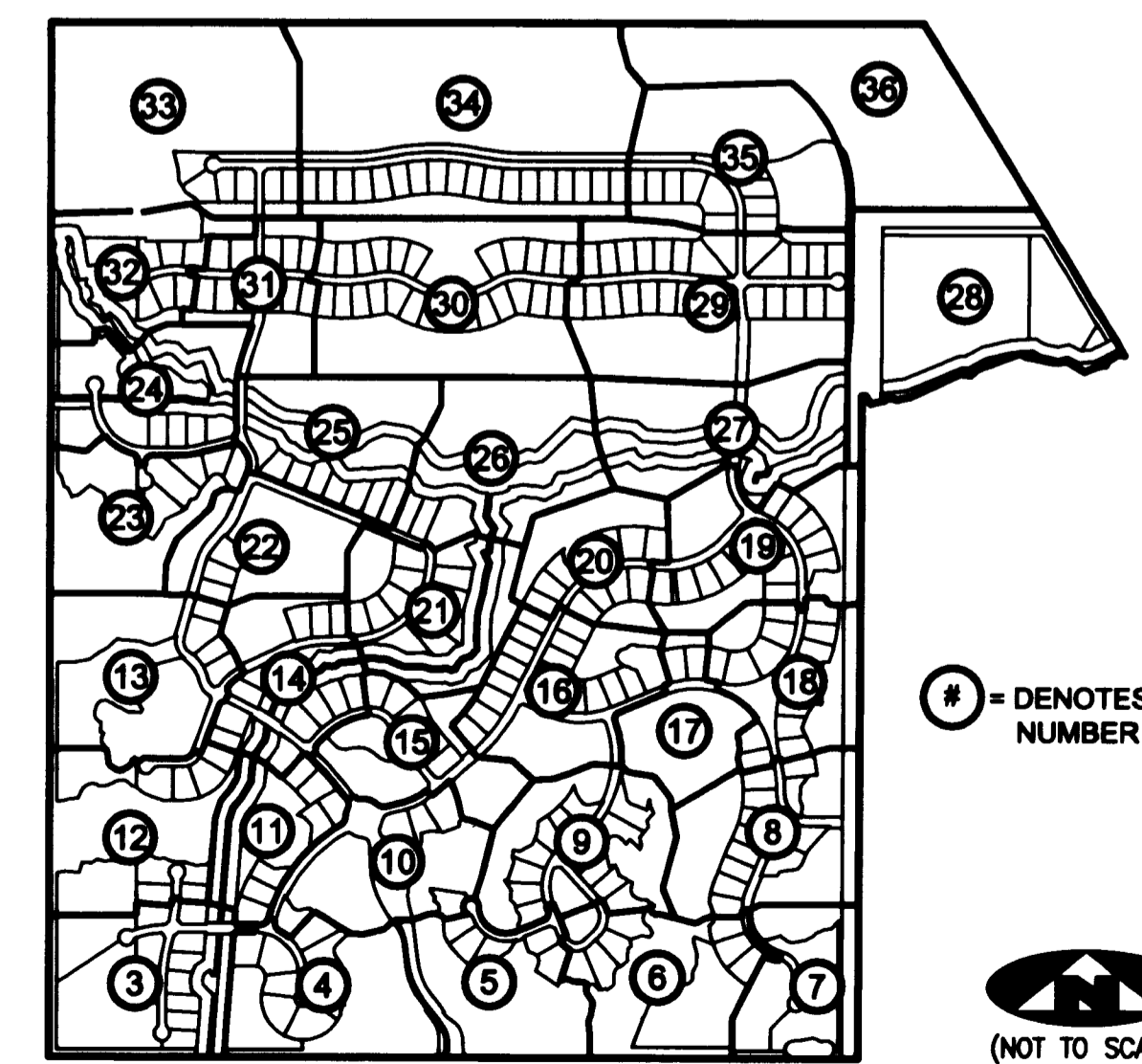
FOR MATCH SEE SHEET 22 OF 36



TANGENT TABLE

T-145 N86°08'36"E 34.92'	T-677 N18°27'26"E 31.04'
T-146 N41°50'31"E 68.09'	T-678 N16°11'18"E 9.76'
T-267 S02°27'33"E 34.92'	T-679 N16°11'18"E 17.55'
T-482 N81°04'16"E 56.73'	T-680 N06°07'16"E 61.84'
T-483 N52°42'28"E 31.26'	T-681 N11°54'14"E 27.44'
T-484 N77°14'17"E 31.11'	T-682 N38°08'36"E 32.80'
T-485 S82°24'40"E 42.76'	T-683 N16°11'18"E 45.19'
T-486 N38°39'29"E 35.93'	T-684 N06°07'16"E 64.66'
T-487 N66°04'43"E 53.40'	T-685 N11°54'14"E 6.18'
T-488 N73°40'06"E 49.78'	T-686 N38°08'36"E 18.17'
T-489 N31°35'00"E 20.35'	T-688 N16°11'18"E 7.62'
T-490 N18°27'26"E 29.17'	T-689 N06°07'16"E 60.91'
T-542 N81°04'16"E 68.39'	T-690 N11°54'14"E 34.53'
T-543 N84°45'33"E 64.67'	T-691 N38°08'36"E 37.67'
T-544 N52°42'28"E 26.02'	T-693 N06°07'16"E 31.63'
T-545 N77°14'17"E 60.88'	T-694 N11°54'14"E 55.80'
T-546 S82°24'40"E 13.85'	T-695 N38°08'36"E 52.30'
T-547 N38°39'29"E 11.86'	T-696 N33°47'20"E 64.19'
T-548 N73°40'06"E 61.54'	T-697 N06°34'04"E 53.77'
T-549 N83°59'53"E 66.74'	T-2040 N74°19'17"W 31.29'
T-550 N31°35'00"E 8.40'	T-2041 N75°18'54"W 34.50'
T-551 N18°27'26"E 23.56'	T-2042 N31°22'15"W 48.71'
T-552 N16°11'18"E 35.96'	T-2043 N89°27'27"E 39.82'
T-601 N81°04'16"E 41.19'	T-2044 S85°58'26"E 55.28'
T-602 N52°42'28"E 34.01'	T-2045 S53°24'29"E 19.23'
T-603 S82°24'40"E 76.27'	T-2046 N82°44'30"E 29.46'
T-604 N38°39'29"E 68.04'	T-2047 N82°43'37"E 13.91'
T-605 N66°04'43"E 22.37'	T-2048 N51°08'37"E 36.52'
T-606 N73°40'06"E 34.11'	T-2049 S15°29'09"W 23.08'
T-607 N31°35'00"E 36.28'	T-2050 S10°57'10"W 32.44'
T-608 N18°27'26"E 36.65'	T-2051 S01°54'52"W 62.24'
T-669 N81°04'16"E 52.85'	T-2052 S06°31'52"E 36.56'
T-670 N52°42'28"E 33.00'	T-2053 S16°31'13"W 22.65'
T-671 N77°14'17"E 21.19'	T-2054 S19°14'03"W 29.61'
T-672 S82°24'40"E 52.40'	T-2055 S37°14'57"E 65.20'
T-673 N38°39'29"E 43.96'	T-2056 S71°33'00"W 40.11'
T-674 N66°04'43"E 45.64'	T-2057 N11°29'39"W 55.22'
T-675 N73°40'06"E 45.87'	T-2058 N28°38'25"E 20.58'
T-676 N31°35'00"E 24.33'	T-2059 N09°55'11"W 52.00'

SHEET INDEX



CURVE TABLE

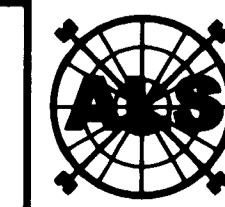
C326 CA=10°16'36" R=275.00' L=49.32' LCB=S59°28'21"W CHD=49.26'
C327 CA=19°30'16" R=275.00' L=93.61' LCB=S44°34'56"W CHD=83.16'
C331 CA=05°18'58" R=498.96' L=46.00' LCB=S44°28'59"W CHD=45.98'
C384 CA=04°56'41" R=525.00' L=45.31' LCB=S84°52'04"W CHD=45.29'
C416 CA=02°30'00" R=1985.00' L=85.74' LCB=N54°53'58"W CHD=85.73'
C417 CA=00°48'47" R=1985.00' L=26.75' LCB=N58°32'22"W CHD=26.75'
C418 CA=02°16'20" R=1985.00' L=77.93' LCB=N58°03'56"W CHD=77.82'
C419 CA=00°51'37" R=1985.00' L=29.50' LCB=N59°37'54"W CHD=29.50'
C420 CA=02°13'20" R=2035.00' L=78.92' LCB=N55°40'51"W CHD=78.82'
C421 CA=00°43'57" R=2035.00' L=26.01' LCB=N57°09'29"W CHD=26.01'
C422 CA=02°08'04" R=2035.00' L=75.61' LCB=N56°35'29"W CHD=75.60'

LEGEND

(R)	DENOTES A RADIAL LINE	R	DENOTES RADIUS DISTANCE	□	DENOTES A SET PERMANENT REFERENCE MONUMENT 4"x4" CONCRETE MONUMENT WITH DISK (LB 7344)
C/L	DENOTES A CENTERLINE	L	DENOTES ARC LENGTH DISTANCE	●	DENOTES A SET PERMANENT CONTROL POINT
DE	DENOTES A PRIVATE DRAINAGE EASEMENT	CA	DENOTES CENTRAL ANGLE	○	DENOTES A FOUND PERMANENT CONTROL POINT
UE	DENOTES UTILITY EASEMENT	LCB	DENOTES LONG CHORD BEARING		
LSE	DENOTES LIFT STATION EASEMENT	CHD	DENOTES CHORD DISTANCE		
MCAE	DENOTES MARTIN COUNTY ACCESS EASEMENT	ORB	DENOTES OFFICIAL RECORDS BOOK		
FM	DENOTES FORCEMAIN EASEMENT	ORB	DENOTES TRACT LINE OF THE PLAT OF PALM CITY FARMS PLAT BOOK 6, PAGE 42		
LME	DENOTES LAKE MAINTENANCE EASEMENT				

SURVEYOR'S NOTES

- THE BASE BEARING, AS SHOWN HEREON, IS N89°58'48"W ALONG THE SOUTHWEST LINE OF THE SOUTHWEST QUARTER OF SECTION 15, TOWNSHIP 38 SOUTH, RANGE 40 EAST.
- IN THOSE INSTANCES WHERE UTILITY OR DRAINAGE STRUCTURES ARE CONSTRUCTED IN CONFLICT WITH THE PLATTED PERMANENT CONTROL POINT POSITION STRADDLERS MONUMENTED AS PERMANENT CONTROL POINTS WILL BE SET TO REFERENCE THE PLATTED POSITION.
- LINES THAT INTERSECT CURVES ARE RADIAL UNLESS OTHERWISE NOTED.
- THIS INSTRUMENT WAS PREPARED BY WM. R. VAN CAMPEN, PROFESSIONAL SURVEYOR AND MAPPER NO. 2424, IN AND FOR THE OFFICES OF ASSOCIATED LAND SURVEYORS, INC., 4152 WEST BLUE HERON BOULEVARD, SUITE 121, RIVIERA BEACH, FLORIDA, 33404



ASSOCIATED LAND SURVEYORS, INC.

4152 W. BLUE HERON BOULEVARD-SUITE 121  
RIVIERA BEACH, FLORIDA 33404 LB 7344  
PHONE: (561) 848-2102 FAX: (561) 844-9659 EMAIL: ALLSURVEY@AOL.COM

FILE: P260PLAT

FB:	WO.NO.: P260
SCALE: 1"=60'	DATE: 1/6/2005
DWN: KVC	SHEET 14 OF 36